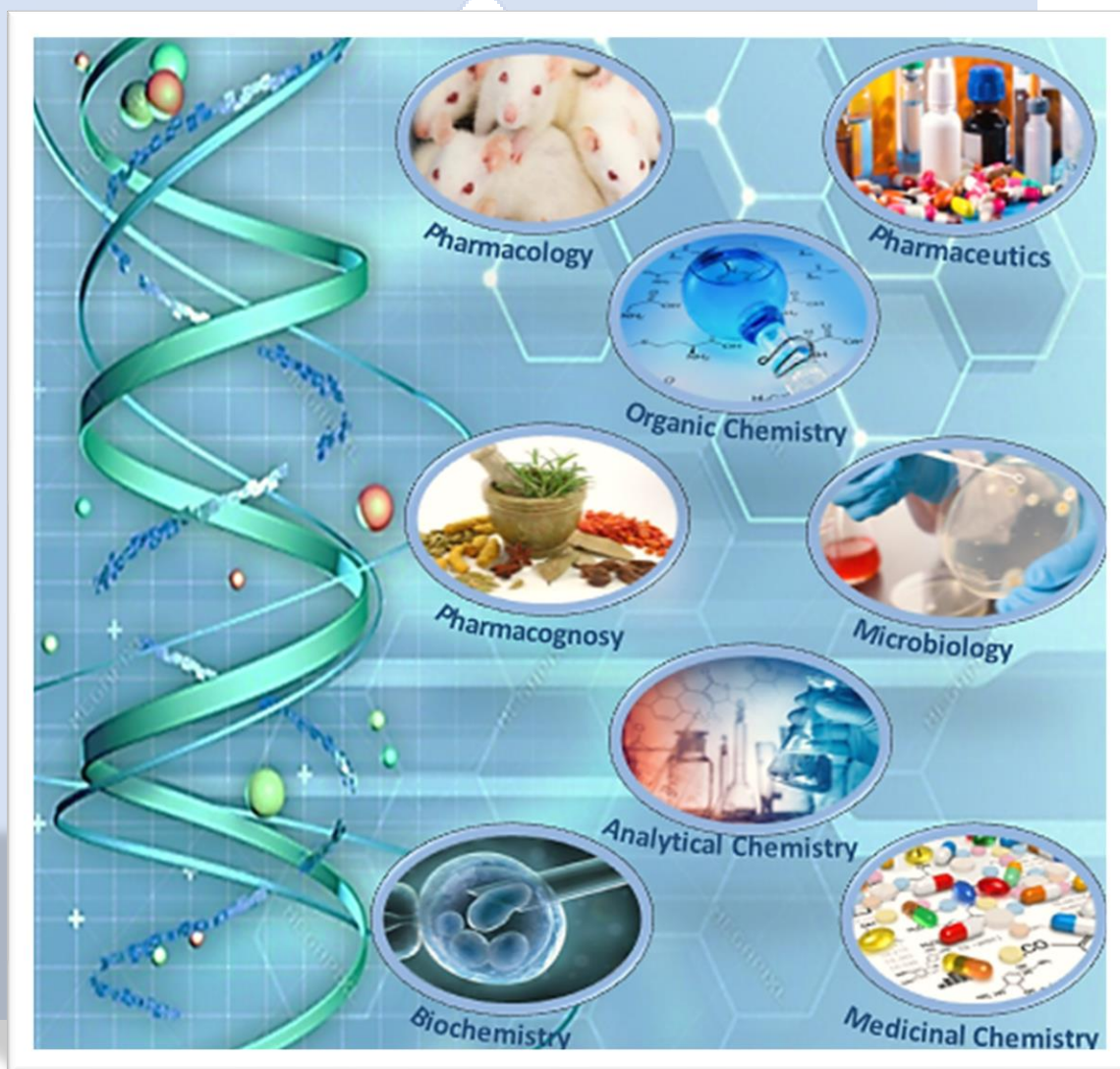


الامكانات البحثية بكلية الصيدلة – جامعة النهضة



مقدمة

في إطار سعي جامعة النهضة لأن تكون في مصاف الجامعات المتقدمة ذات التصنيف العالمي ولمواكبة التطور العالمي في المجال الصحي ومن منطلق كون مهنة الصيدلة واحدة من أكثر المهن أهمية في مجال الرعاية الصحية ولأنها لا تختص فقط بالعلاج والوقاية من الأمراض ولكنها معنية أساساً بصناعة واكتشاف وتطوير الدواء وكذلك حماية الصحة العامة للمجتمع.

لذا فقد اولت الجامعة اهتماماً كبيراً بالمجال البحثي حيث أن البحث العلمي هو العمود الفقري للنشاط الأكاديمي وهو بوابة المستقبل لأي مؤسسة أكاديمية أو بحثية والارتقاء به سيكون الجسر الوحيد للتنمية وخدمة المجتمع المحلي والعالمي.

ولقد حازت كلية الصيدلة – جامعة النهضة في الفترة الاخيرة مكانة رفيعة من حيث البحث العلمي لذلك رأت الكلية ضرورة البدء في عمل كتيب لإبراز الامكانات البحثية والبشرية بالكلية.

NAHDA UNIVERSITY
IN BENI SUEF
جامعة النهضة ، بني سويف

الهيكل التنظيمي بالكلية



جامعة النهضة



وحدة ضمان الجودة



كلية الصيدلة



أولاً: الإمكانيات البحثية لبيت الحيوان

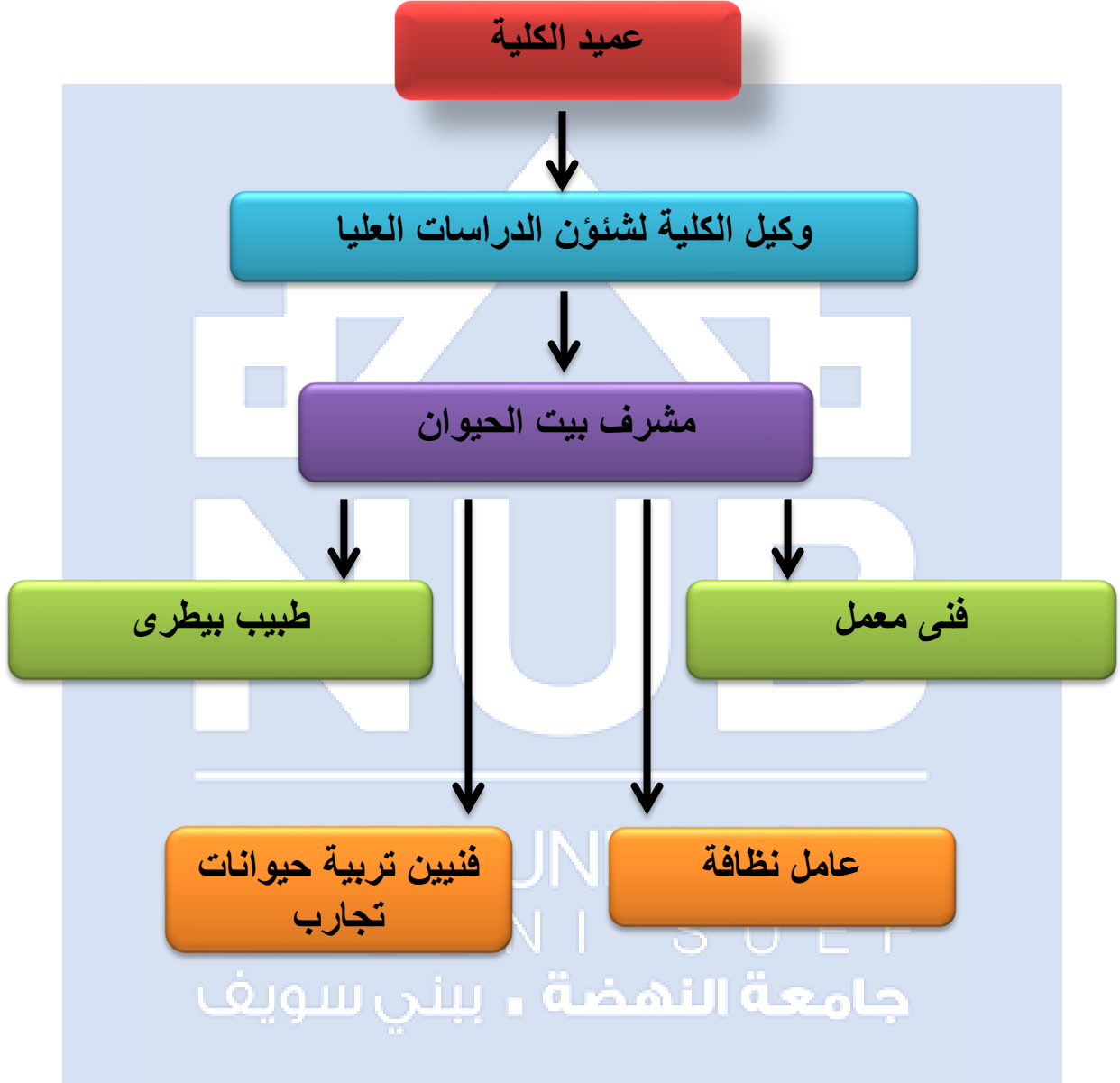


بيت الحيوان هو وحدة ذات طابع خاص تابعة لكلية الصيدلة بالجامعة، وتهدف هذه الوحدة الى تقديم الخدمات البحثية المختلفة الى الطلاب والباحثين من داخل وخارج الجامعة. كما يشتمل على انتاج وتربية حيوانات التجارب من فصيلة الفئران والجرذان. ويعد بيت الحيوان أحد دعائم البحث العلمي بالجامعة حيث يوفر لطلابها وباحثيها حيوانات التجارب اللازمة لعمل الابحاث العلمية دون مقابل. بالإضافة الى ذلك يقوم بيت الحيوان بتوفير المكان المناسب للباحثين لأجراء الابحاث العلمية من شتى الكليات والجامعات المصرية. كما يحتوي

بيت الحيوان على معمل قياسات مزود بالعديد من الاجهزة الحديثة التي توفر للباحث المناخ المناسب لإنهاء ابحاثه بسهولة ويسر. الي جانب غرفة معالجة وجراحة لتجميع العينات بعد اجراء التجارب البحثية. ويعمل القائمين عليه بإدخال قياسات واساليب بحثية حديثة حتى يستطيع مواكبة التطور العلمي ويكون له ميزة تنافسية.

جامعة النهضة ، بني سويف

الهيكل الادارى لبیت الحيوان



يتألف بيت الحيوان من العديد من الغرف اللازمة لاداء البحث العلمى كالاتى:

1- غرفة لتربية فئران التجارب (Mice Room)



تحتوى تلك الغرفة على العديد من اقفاص التربية الصغيرة الحجم و المزودة بالنشارة و العلف و الماء اللازم للتربية. تلك الغرفة مزودة بالاضاءة و التهوية الصحيحة و اللازمة لتربية و انتاج سلالات من فئران تجارب ذات الصحة الجيدة. هذا و يتراوح متوسط انتاج فئران التجارب فى الشهر الواحد ما بينو.....



2- غرفة تربية جرذان التجارب (Rat Room)

تحتوى تلك الغرفة على العديد من اقفاص التربية الكبيرة الحجم و المزودة بالنشارة و العلف و الماء اللازم للتربية. تلك الغرفة مزودة بالاضاءة و التهوية الصحيحة و اللازمة لتربية و انتاج سلالات من جرذان تجارب ذات الصحة الجيدة. هذا و يتراوح متوسط انتاج جرذان التجارب فى الشهر الواحد ما بينو.....



3- غرفة خاصة (Surgical Room)



هذه الغرفة مخصصة للتجارب العلمية و المشاريع البحثية المختلفة على حيوانات التجارب. تلك الغرفة مزودة بأماكن مخصصة لكل باحث لاعاشة و اجراء التجارب المختلفة على حيوانات التجارب اثناء فترة المشروع البحثي. هذا و تم تجهيز تلك الغرفة بكلا من:

- عدد 2 ميزان لقياس وزن حيوانات التجارب

- عدد 2 ميزان الكتروني حساس لوزن كميات مختلفة من المواد

- صندوق زجاجي للزمن لتخدير الحيوانات قبل اجراء التجارب عليها (Anesthetic chamber)

- تربييزة كبيرة جدا مزودة بمصفاة فى المنتصف لاعمال التشرريح المختلفة



جامعة النهضة - البحوث التطبيقية



تحتوى تلك الغرفة ايضا على اقفاص خاصة بجمع البول من حيوانات التجارب حاصلة على براءة اختراع رقم..... من قبل الباحث / مصطفى عاصم مصطفى. حيث تعمل تلك الاقفاص على جمع اكبر كمية ممكنة من عينات البول الخاصة بحيوانات التجارب على مدار الساعة.

4- معمل (Laboratory)

يحتوى المعمل على العديد من احدث الاجهزة البحثية و التى تتيح للباحثين عمل العديد من التجارب و القياسات البحثية و الحيوية المختلفة.



جامعة النهضة ، بني سويف
UNIVERSITY OF NEHEHA, BENI SUEIF

تم تزويد ذلك المعمل باحدث الاجهزة البحثية كالآتي:

UV/VIS Spectrophotometer



PG Instruments T80 UV/VIS Spectrophotometer

Description

The PG T80 UV/VIS is a high performance double beam UV Visible automatic scanning spectrophotometer with a fixed 2nm bandwidth. The instrument covers a wavelength range of 190-1100nm and comes with a built-in 8-position motorized cell holder as standard. T80 UV/VIS has excellent baseline stability and high resolution. With a large 'fold away' LCD display allowing complete display of spectra, and a large easy to use positive touch keypad, the T80 UV/VIS can be operated in "stand alone" mode without a PC. The main unit of the spectrophotometer can perform photometric measurement, quantitative measurement, spectrum scan, DNA/Protein analysis and can print data. When interfaced to a PC the included UVW in 5 software offers many additional functions such as kinetics measurement, access to data base, 3D spectrum analysis, GLP laboratory protocol, data export to Word or Excel, multi-user management, etc. The T80 UV/VIS is a universally accepted and well documented technique offers high performance, ease of use and reliability. It can be used extensively for qualitative and quantitative analysis in applications including the analysis of foods, drugs, pesticide residues, agricultural products and is widely used in the medical care, public health, environmental protection, lifescience and many other organic and biochemical applications.



Sigma 2-16KL Refrigerated Benchtop Centrifuge

Description

The Sigma refrigerated centrifuge has all the essential features you expect in an all-rounder. It also boasts patented, intuitive one-button control with user-friendly illuminated buttons, as well as a convenient safety feature: cycle counting for each rotor with an indication when the rated limit is reached. The Sigma easily achieves +4°C at maximum speed. The Sigma refrigerated centrifuge characterized by maximum speed 15.300 (min⁻¹), Maximum RCF 21.913(xg), maximum capacity 4*100ml, temperature setting -10-+40Co, 50 programs and cycle counting for each rotor.

NAHDA UNIVERSITY
IN BENI SUEF
جامعة النهضة ، بني سويف



Panlab multi-chamber Organ Bath Systems

Description

The Panlab multi-chamber Organ Bath Systems combine the ADInstruments PowerLab data acquisition system, Bridge Amplifier, Isometric Transducers and LabChart software with a Panlab Organ Bath. Your choice of 4, 8 or 16 chambers and tissue chamber size (5, 10, 25 or 50 ml). The compact design of the Panlab Organ Bath apparatus provides a controlled environment for conducting isolated tissue studies. This configuration also provides all the essential components for recording and analyzing data from isolated tissue experiments. Tissue hooks and clamps are supplied, which also allow studies of isolated tissue rings or other tubular structures.

**Microlab 300****Description**

The Microlab 300 is a true semi-automated clinical chemistry analyzer in all its glory. A system that is designed as a clinical chemistry analyzer and not as a standard photometer. Thousands of users have experienced the proven reliability and high performance of the Microlab all over the world. Robust, compact and easy-to-use, it is ideal for smaller or satellite laboratory locations. Together with a superior menu of ready-to-use, liquid-stable reagents, the Microlab 300 covers primary, STAT or back-up testing needs. This system offers minimal maintenance and effective use of consumables to provide a truly cost effective operation.

**IKA T25 Ultra Turrax Homogenizer**

Description

IKA T25 Ultra Turrax is a high speed digital Homogenizer ideal for large batch homogenizing of cell tissues, air pollution filter extracts and emulsifying suspended solids. The shaft of the homogenizer is constructed out of 316 shielded stainless steel and has a volume capacity of 0.3 to 2000 ml. The digital display of the IKA T25 Ultra Turrax reads the set speed and can be easily adjusted by the dial. System includes rotor and stand.

ELISA



Multiskan TM FC microplate photometer

Description

The Multiskan FC provides proven performance and reliable results through built-in self diagnostics, IQ/OQ/PQ and verification tools. The visual user interface and multiple language capability ensures excellent usability. The Multiskan FC (IVD model) with internal software conforms to the European IVD (In Vitro Medical Device) directive, making it ideal for qualitative and quantitative ELISA applications in clinical laboratories. Simplify your ELISA workflow by using our eGuide to see our complete portfolio for all your ELISA needs.



Veriti 96 well thermal cycler

Description

The Applied Biosystems® Veriti® 96-Well Thermal Cycler delivers the proven reliability of Applied Biosystems® instruments. With the added control of VeriFlex™ technology, you have six independent temperature blocks that provide precise control over your PCR optimization. Additionally, the color touch screen simplifies setup and use of the Veriti® 96-Well Fast Thermal Cycler. Optional setups for fast or standard PCR methods provide with flexibility to shorten your PCR cycling times. The Veriti® 96-Well Thermal Cycler is equipped with a standard 0.2 mL block configuration.

Description



Immunofluorescence is a technique which uses antibodies conjugated to fluorescent dyes to evaluate cells in suspension, cultured cells, tissue, beads and microarrays for the detection of specific proteins.

The immunofluorescence technique to perform a variety of lab tests and observations, each of which provides a fresh perspective for the sample currently undergoing analysis.

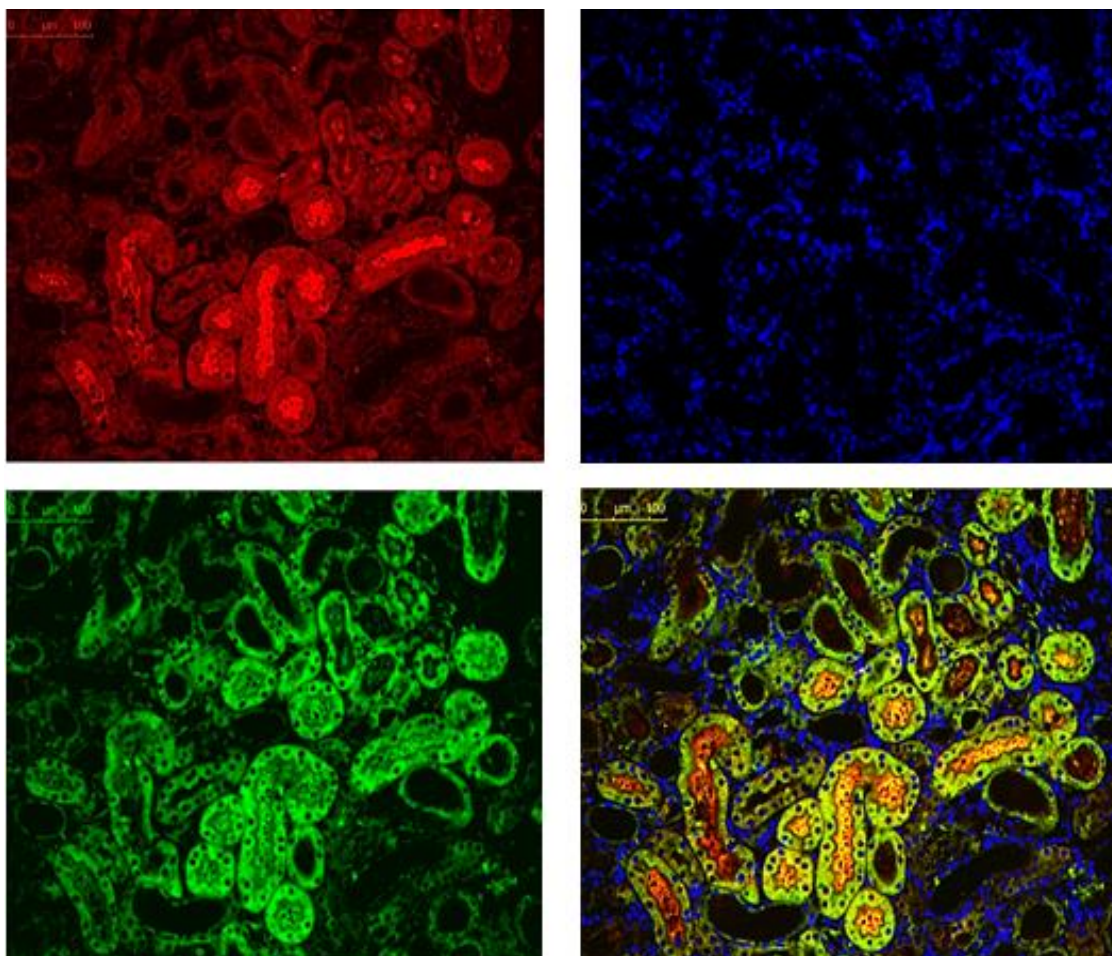
For instance, a researcher may opt to use this testing method to examine tissue samples and beads, detect particular proteins using microarrays, or they might choose to evaluate cultured cells, as well as those in suspension.

A researcher may choose to apply this technique when studying DNA sequences on chromosomes, as these particles are extremely small and hard to detect. Obtaining spatial data concerning tissue or cell genetics is another way to use immunofluorescence, as is the observation of parasites and bacteria.

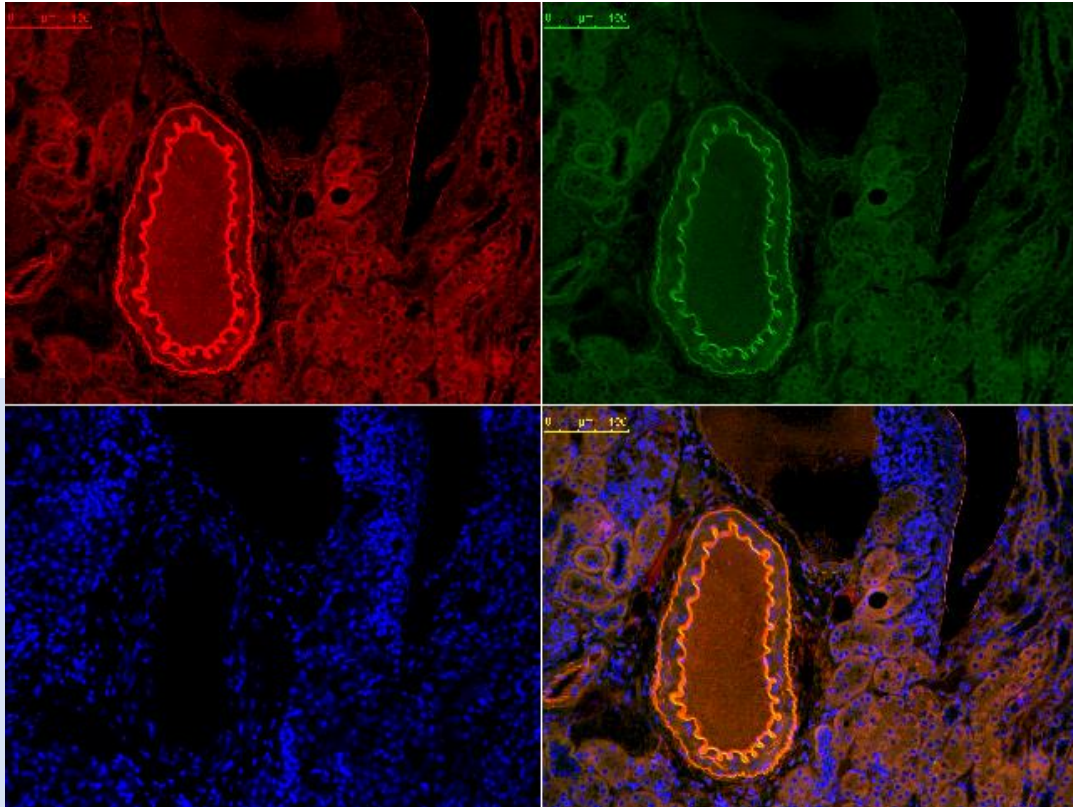
The deeper layers of a cell or tissue, along with the antigens that infect these layers, is another area that scientists can study using this staining method.

**** نتائج بعض تجارب ال Immunofluorescence التي تمت اجرائها ببيت الحيوان باستخدام وحدة**

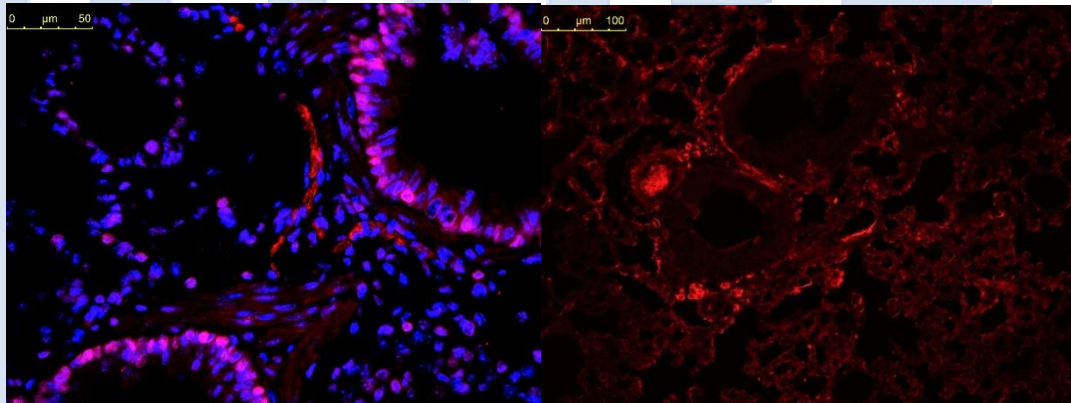
:Immunofluorescence System



Double stain Immunofluorescence of PAR-2 (red) and Tissue Factor (green) in renal section from rat treated with gentamicin using DAPI (blue) as counterstain for nucleus.



Double Immunofluorescence stain of PAR-2 (red) and Tissue Factor (green) in renal section from rat treated with gentamicin using DAPI (blue) as counterstain for nucleus.



Single Immunofluorescence stain of TGF- β (red) and DAPI (blue) as counterstain for nucleus in fibrotic lung of mice induced by radiation.

Single Immunofluorescence stain of α -SMA (red) in fibrotic lung of mice induced by radiation.

و الجدير بالذكر ان العديد من الباحثين قاموا باداء تجاربهم العلمية داخل بيت الحيوان مستفيدين بالامكانات البحثية المتوفرة بالمكان لانجاز العديد من النماذج التجريبية. على سبيل المثال لا الحصر النماذج التجريبية التالية:

Experimental models available in our animal house

- ✚ Liver fibrosis model induced by CCL4
- ✚ Liver toxicity model induced by ischemia reperfusion surgery
- ✚ Liver fibrosis model induced by single oral paracetamol overdose
- ✚ Liver injury induced by CLP sepsis model
- ✚ Liver toxicity model induced by thioacetamide
- ✚ Liver fibrosis model model induced by thioacetamide
- ✚ Rheumatoid arthritis model induced by complete freund's adjuvant
- ✚ Rheumatoid arthritis/ diabetes mellitus model induced by complete freund's adjuvant/ streptozocin
- ✚ Diabetes mellitus model induced by streptozocin
- ✚ Nephrotoxicity model induced by gentamycin
- ✚ Nephrotoxicity model induced by cisplatin
- ✚ Bronchial asthma model induced by ovalalbumin
- ✚ Ulcerative colitis model induced by iodoacetamide
- ✚ Ulcerative colitis model induced by glacial acetic acid

هذا و على سبيل المثال لا الحصر ... فقد استفاد العديد من الباحثين بجامعات مختلفة بالخدمات البحثية المقدمة من قبل بيت الحيوان من حيوانات تجارب و قياسات معملية و غيرها. على سبيل المثال:

- باحثين بكلية الصيدلة – جامعة الفيوم

- باحثين بكلية الطب البشرى – جامعة الفيوم

- باحثين بكلية الصيدلة – جامعة المنيا

- باحثين بكلية الطب البشرى – جامعة المنيا

- باحثين بكلية الزراعة – جامعة المنيا

- باحثين بكلية الصيدلة – جامعة اسيوط

- باحثين بكلية الطب البشرى – جامعة اسيوط

- باحثين بكلية الصيدلة – جامعة بنى سويف

- باحثين بكلية الطب البشرى – جامعة بنى سويف

- باحثين بكلية الطب البيطرى – جامعة بنى سويف

- باحثين بكلية الدراسات المتقدمة – جامعة بنى سويف

- باحثين بمعامل ابحاث خاصة بالجيزة

- باحثين بمعامل ابحاث خاصة بمدينة نصر

NAHDA UNIVERSITY
IN BENI SUEF
جامعة النهضة ، بني سويف

ثانياً: معامل أبحاث قسم العقاقير Pharmacognosy Lab

تحتوى كلية الصيدلة – جامعة النهضة على معمل ابحاث خاص بقسم العقاقير مجهز بالاجهزة الاتية:

Biotage flash chromatography



Biotage flash chromatography BUCHI-Reveleris® X2 system UV.

Description

Flash chromatography is an advanced and powerful purification technique that allows fractionation of complex mixtures (e.g. plant extracts and/or the end products of chemical reactions). Reveleris® X2 flash chromatography system can help in providing maximum purity and recovery of target compounds in minimal time. Its UV/Vis detector can detect a wide range of purified compounds that are collected by its synchronized fraction collector. Its powerful pump provides a maximum flow rate of 200 mL/min. In addition, the whole system is automated and the running parameters can be modified quickly on a large 12” touch screen display.

Rotary Evaporator



Rotary evaporator BUCHI-Rotavapor® R-300

(3 Rotary evaporator)

Description

Rotary evaporator is an important system for solvent recovery after solvent extraction of plant material or at the end of chemical reactions. Rotavapor® R-300 provides user-friendly operation thanks to the immediate adjustment of heating temperature and rotation speed with intuitively positioned control knobs. Its powerful vacuum pump (V-300®) together with the attached recirculating chiller (F-100®) allows fast solvent evaporation with maximum recovery even at room temperature.

Ultrasonic Bath



Ultrasonic bath Elmasonic®

Description

This apparatus utilizes ultrasonic vibrations to enhance the dissolution of crude plant extracts and/or organic compounds prior to their analysis (e.g. HPLC, IR etc.).



رابعاً: قسم الكيمياء الصيدلانية والعضوية

Medicinal and Organic chemistry

Rotary Evaporator



IKA Rotary Evaporator

Description

IKA rotary evaporators set new standards for safety, efficiency and ease of use. These rotovaps offer excellent distilling solutions to the demanding user. All IKA RV 10 rotovaps are equipped with a motorized lift with safety stop function. The comprehensive safety features also include interval operation, smooth start, end position recognition, automated lift-out in case of power outage and a timer function. Additionally, the RV 10 digital is equipped with a temperature display and an RS 232 interface. Distillation has never been more easy and intelligent than with the new RV 8 and enhanced RV 10 control auto. The RV 8 rotovap is the latest in distilling technology that gives you more options that fit within your budget while making no compromise on performance. For fully automated distillation, IKA offers the enhanced RV 10 control auto complete with automatic boiling point detection, integrated vacuum controller, solvent library, USB

interface, graphical display and direct connection to a speed controlled vacuum pump.

Infra-Red Spectroscopy



TG-FTIR Burker

Description

Thermogravimetric analysis (TG) follows changes in mass of the sample as a function of temperature and/or time. TG gives characteristic information about the composition of the measured sample, in particular the amounts of the various components and their thermal behavior. In addition, further measurements are possible such as kinetic analysis of thermal decomposition.

The identification of gases released directly from the sample or during thermal treatment cannot be performed just by thermal analysis, but coupling a spectroscopic method such as Fourier-Transform-Infrared (FTIR) spectroscopy is an excellent solution. IR spectroscopy is a classical technique, which depends upon the interaction of infrared radiation with the vibrating dipole moments of molecules. It gives, with the exception of homonuclear diatomics and noble gases, a characteristic spectrum for each substance



Melting Point (Stuart) Biocote 89\05\601

Description

Digital selection and display of temperature negates the need for a thermometer. Two samples can be tested simultaneously. Choice of accuracy, 1 (SM4007) or 0.1 (SM4006) degree resolution. Samples are viewed via a magnifying lens with clear observation aided by built in illumination. Simple to follow instructions are printed directly on the instrument in most European languages for ease of use. Extendible back feet allow the unit to be operated at the optimum viewing angle. Supplied with calibration certificate showing individual serial number for traceability. Both units supplied with pack of glass melting point tubes, sealed at one end (SM4004).

NAHDA UNIVERSITY
IN BENI SUEF
جامعة النهضة ، بني سويف

رابعاً:

Bio Chemistry Lab



NUB

NAHDA UNIVERSITY
IN BENI SUEF
جامعة النهضة ، بني سويف

خامسا:

Microbiology Lab

Laminar Air Flow



Laminar air flow-Euro Clone Bioair Class II - Model 1.2

Description

- It is a microprocessor controlled, with volumetric sensor for exhausted airflow monitoring
- Provide high airflow stability, both in case of transitional disturbances or progressive filter clogging
- Provide continuous monitoring of the front barrier airflow for the highest operator safety
- Feature a bar-graph analog display for the easiest reading of air speed value (barrier and down flow)
- Feature a hydraulic H adjustable support stand (manual and electrical)
- Have volt free contacts for remote monitoring of exhaust fan or other devices that needs to be synchronized with cabinet status (ON/OFF)
- Incorporate a low barrier alarm.

Autoclave



Autoclave SX700

Description

Fast and compact, high-capacity autoclave sterilizer with minimal footprint-ideal for any lab! 69-Liter top-loading laboratory autoclave sterilizer that accommodates up to 3 stackable stainless-steel baskets for maximum high-capacity loads (includes 2 stainless steel baskets). Standard-equipped with dual fan system for fast cooling, allowing for fast cycles in under one hour. Easy installation, no plumbing required (just add water!). Foot-pedal assisted mechanical lid for easy opening. Wheels for easy movement and storage. High-quality, durable, and long-lasting product manufactured in Japan and comes with 1-year warranty. For laboratory use / research purposes only.

NAHDA UNIVERSITY
IN BENI SUEF
جامعة النهضة ، بني سويف

سادسا: إمكانيات قسم الصيدلانيات
Pharmaceutics Lab

Rotary Press Machine



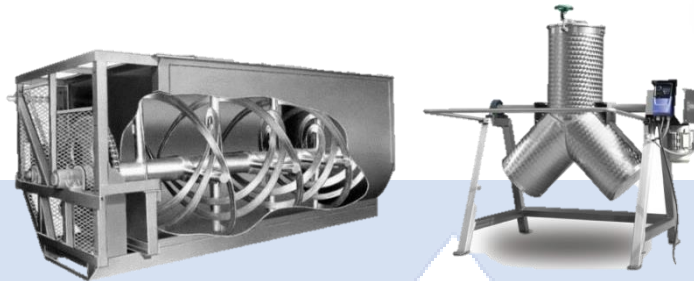
Rotary Press Machine PL2

Description

Lab Press LP- II is a High Tech Rotary Tablet Press in table-top design for R & D and small batch production. This Single sided R & D Tablet Press fully conforms to GMP and the safety requirements. All Electrical settings can be performed by Front panel with indicators at the front of the machine. The machine is equipped with pre pressing and main pressing systems. The compression force can be adjusted up to 6 tons.

A rotary force feeder with adjustable speed as well as a pre-compression station using rollers (2 tons) are included as standard. The turret is driven by center shaft drive mechanism by a motor and Powerful Reduction gear box. The turret speed is adjusted by A.C. (inverter) frequency drive.

Mixer



Y-shaped and Ribbon mixer

Description

- The drum of the mixers fully made out of food grade stainless steel
- This machine is used for mixing powder or other such items in order to create a perfect blend of any kind
- The drum of the mixer rotates both reverse and forward direction
- Material inside the drum goes up and down as the drum moves
- The blades inside the drum are fitted in such a way that any type of powder blends into a proper form
- Mixing drum and blades are made out of good quality stainless steel to avoid any kind of chemical reaction
- Very easy cleaning process

Oscillating Granulator



Oscillating granulator FCG Erwka

Description

Wet Granulator with oscillating rotor for the production of wet granules. The granules can be produced in varying sizes depending on the employed sieve mesh. All parts coming into contact with the product are made of stainless steel. Working capacity is max. 30 kg / h depending on the material and mesh width of the sieve used. The unit is supplied as standard with two sieves 1.0 mm and 1.6 mm MW respectively. The following mesh sizes are also available: 0.315, 0.63, 0.8, 1.0, 1.25, 1.6, 2.0, 2.5 and 3.15 mm. Other special sieves are available on request.



Pelletizer and Coating Pan

Autoclave

Pelletizer and Coating Pan Erweka

Description

The pelletizer GTE (300 mm diameter) is attached to the AR 403 via the Universal Gear UG which enables the operator to adjust the operating angle to the optimal position during operation. The material can be fed in manually or continuously. The rotary movement of the pan carries the product to the top of the pan and then flows down the pan in an even stream to the base. By addition

of the requisite amount of liquid, this process can be converted into the formation of pellets. The angle of the pan and the amount of liquid added determines the pellet size. When the pan is full, the pellets will continuously roll over the edge of the pan into a waiting container. The ERWEKA coating pans are used for the development of coating tablets. The universal gear UG is required to attach the coating pan to the motor drive. This allows adjusting the angle of the pan and getting an optimum result from the coating process.



Planetary Stirrer

Planetary Stirrer DER Erweka

Description

The Planetary stirring unit for mixing of creams, ointments, pastes, moist powders and liquids. This powerful mixing attachment comes with various mixing / stirring accessories e.g. kneading hook, mixing paddle, whisk and a fluoropolymer scraper for removing any product adhering to the side of the bowl, thus ensuring a homogenous mixing in the shortest possible time. The stirring/mixing accessories and vessel (5 liter volume, working capacity 60 %) are made out of stainless steel. Optionally an electric heated bowl DER or a double jacket bowl DB for heating and cooling by water are available.

سابعاً: إمكانيات المعمل المركزي
Central Lab

UPLC



UPLC, 3000 series, Dionex

Description

- It supplied with quaternary pump, auto sampler, different columns sets, mobile phase with flow rate range from 0.1 to 10 mL/min, and

with DAD detector which can scan samples from 190 to 900 nm (UV and visible region).

- Suitable for all kinds of qualitative and quantitative chromatographic matrices like pharmaceuticals, herbal extracts and biological fluids.

Spectrometer



FTIR spectrometer

Description

The external accessory PMA 50 has been specially developed for Polarization Modulation measurements. It can be adapted to Bruker TENSOR and VERTEX FTIR spectrometers. All optic and electronic components in the PMA 50 module are optimized for the Polarization Modulation. Both linear dichroic measurement techniques like PM-IRRAS and circular dichroic experiments like VCD spectroscopy can be realized using this dedicated system.

The core of the Polarization Modulation technique is the Photoelastic Modulator (PEM) with a nominal modulation frequency of 42 kHz. With the help of the parallel 24-bit dual-channel data acquisition technology the sum and the difference signals can be collected simultaneously with highest sensitivity. The PMA 50 module exhibits short beam path, and therefore provides optimal S/N ratio and stability.

In combination with optical filters and the automated software controllable internal aperture in TENSOR and VERTEX spectrometers the signal quality can be further optimized with respect to the desired spectral range and sample size. To reach the highest performance in Polarization Modulated Applications, the polarized light is focused on the detector element by a lens providing that only non-polarizing optical components are used after polarization.

Purification System



Deionized water purification system

Description

The Select HP provides a consistent supply of high quality pure water, making it suitable for HPLC, ion chromatography, atomic absorption, and clinical analyzer feed.

بالإضافة الى وجود اجهزة بحثية ثابتة بجميع معامل ابحاث الكلية (Bench Top Facilities) و هي:



Analytical Balance



Magnetic Stirrer



Cooled Refrigerator



Digital Balance



Centrifugator



PH Meter



Micro-Centrifugator



Thermostatic Shaking Water Bath



Water Bath



Centrifugator



Oven



Vortex Mixer



-80 Deep Freezer



Microscope

NAHDA UNIVERSITY
IN BENI SUEF
جامعة النهضة ، بني سويف

الامكانات البشرية

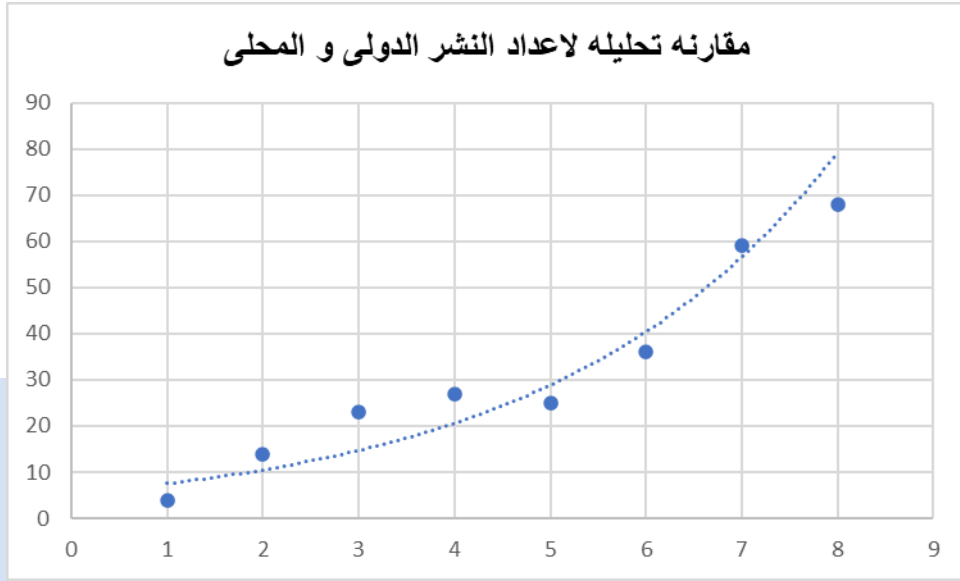
تتمتع كلية الصيدلة – جامعة النهضة بأنها تضم نخبة من الباحثين المتميزين و البالغ عددهم 122 باحث من الأقسام المختلفة طبقا للجدول الآتي:

عدد الباحثين	القسم
30	قسم الصيدلانيات
21	قسم الادوية و السموم
17	قسم العقاقير
33	قسم الكيمياء الصيدلانية (عضوية - تحليلية - دوائية)
10	قسم الكيمياء الحيوية
11	قسم الميكروبيولوجيا و المناعة

هذا و تعتبر تلك الامكانات البشرية قوة بحثية ضاربة حيث يبلغ اجمالى عدد البحوث الدولية فى الفترة من 2013-2018 و طبقا للخطة البحثية بالكلية 129 بحث دولي, بما يعادل تقريبا 4 ابحاث دولية / باحث بالكلية, بما يثبت التميز البحثى بالمؤسسة.

قامت كلية الصيدلة – جامعة النهضة باجراء تحليل احصائى لدراسة تاثير تطور الامكانات البحثية بالكلية على معدل النشر الدولى السنوى للمؤسسة, وكان المؤشر كالتالى:

السنة	2013	2014	2015	2016	2017	2018	2019	2020
عدد الابحاث	4	14	23	27	25	36	56	64



تشير تلك الارقام و المؤشرات السابقة الى مدى تصاعد و تطور مجال البحث العلمى بالكلية مما يعكس الامكانات البحثية المتاحة بالمؤسسة.

مكتبة الكلية

تتلخص مهمة المكتبة في توصيل الباحث الي كل ما يحتاجه في مجال دراسته وتخصصه وتسهيل الوصول للمراجع الموجودة على الارفف.

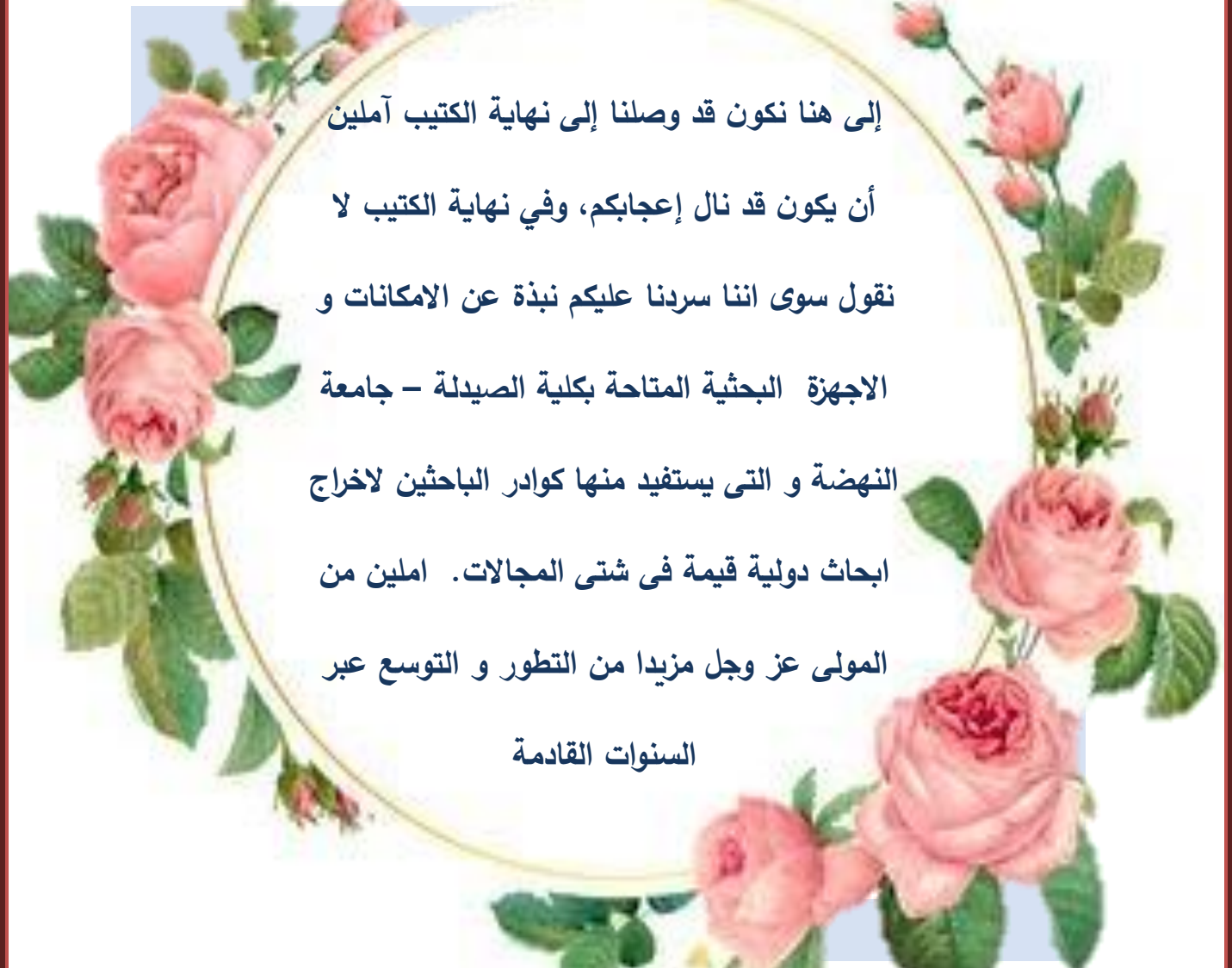
- تقدم المكتبة العديد من الخدمات منها:
 - خدمة الاطلاع الداخلي.
 - خدمة الاطلاع الخارجي.
 - خدمة الإحاطة الجارية.
 - خدمة البث الانتقائي للمعلومات.
 - خدمة الرد على الاستفسارات.

توفر المكتبة ايضاً خدمة الاستفادة المثلي من قاعدة البيانات والتي تعرف بأسم (بنك المعرفة المصري).
تحتوي المكتبة على 124 رسالة علمية بالاضافة الى 890 كتاب وتقسم على هيئة أرفف حسب كل قسم من
اقسام الكلية كالآتي: -

- كتاب (133) Pharmacognosy
- كتاب (70) Biochemistry
- كتاب (62) Organic chemistry
- كتاب (131) Pharmaceutics
- كتاب (66) Analytical chemistry
- كتاب (173) Pharmacology
- كتاب (34) Medicinal chemistry
- كتاب (120) Microbiology

NUB

NAHDA UNIVERSITY
IN BENI SUEF
جامعة النهضة ، بني سويف



إلى هنا نكون قد وصلنا إلى نهاية الكتيب آمليين
أن يكون قد نال إعجابكم، وفي نهاية الكتيب لا
نقول سوى اننا سردنا عليكم نبذة عن الامكانات و
الاجهزة البحثية المتاحة بكلية الصيدلة - جامعة
النهضة و التي يستفيد منها كوادر الباحثين لاجراج
ابحاث دولية قيمة فى شتى المجالات. امليين من
المولى عز وجل مزيدا من التطور و التوسع عبر
السنوات القادمة